

Aluminium 2Pc cans 250ml Stubby 202# lid

Code: CPS-250-A52.4

Description: Bev 2Pc Can - 250ml Aluminium 52.4/66x91.7

Material : Aluminum alloy 3104, Temper : H19,

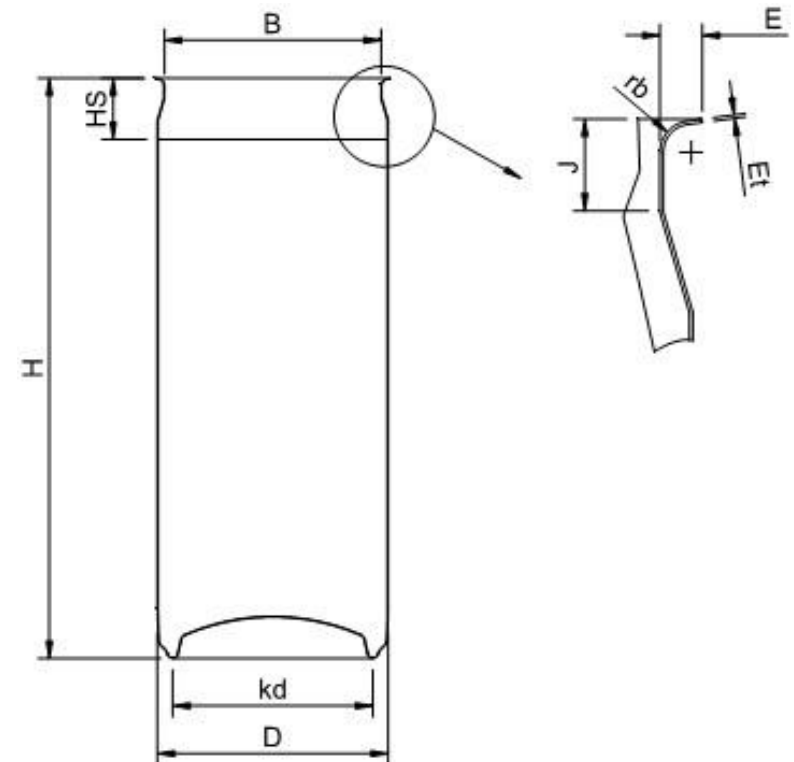
Coil thickness : 0.270±0.005mm

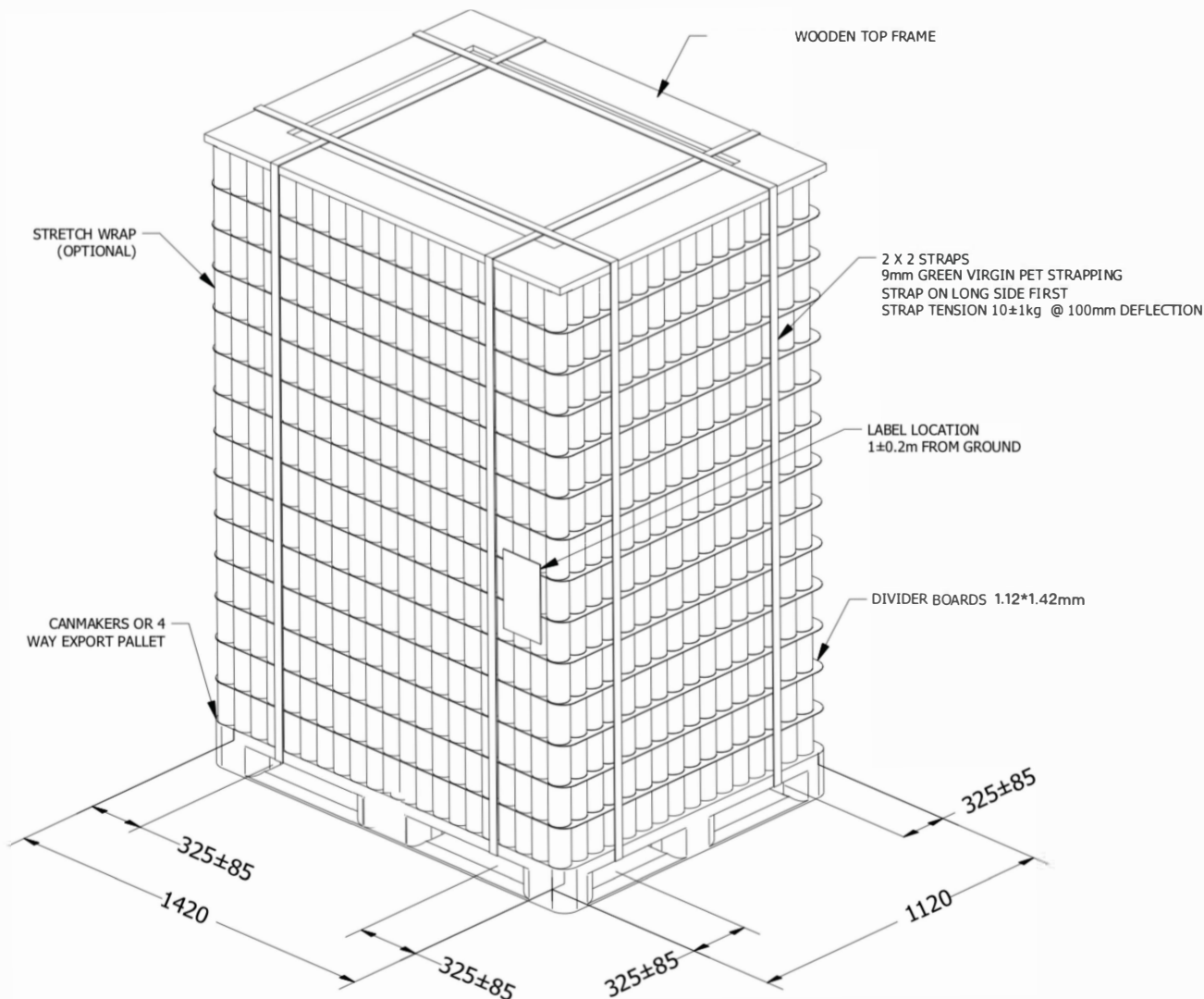
Internal coating : BPANI

External coating : Decorated +Clear varish+BRC

Specification

Entity Code	Entity Description	Value	Tolerance
B	Inside Neck Diameter	52.40 mm	±.25
D	Outside Can Diameter	66.20 mm	
E	Flange Width	2.10 mm	±.25
Et	Flange Thickness	.160 mm	
rb	Flange Radius	1.02 mm	
Kd	Stand diameter	48.00mm	
H	Open Can Height	91.70mm	±.30
J	Neck seaming clearance	3.05mm	
HS	Freeboard depth	18.16mm	±.50
	Nominal Fill Volume (ml)	250	
	Container Brimful Capacity (ml)	270	±3 TBC
	Minimum Dome Reversal Pressure	6.2 bar	Min.
	Axial Column strength	1KG	Min.





250ml stubby aluminum cans

Wooden Pallets size:W1120*L1420*H2457mm
 389 cans per layer
 25 layers per pallet
 9725 cans per pallet
 16 pallets per 40HQ
 Gross weight: Approx 115kg/pallet

* Alternative pack pattern. Site Dependant
 Heights are for Maximum Local Production and Sea/Interstate Freight
 Can Layout per Layer Available on Request

SPECIFICATION	Packing layout of Cans	F	 DESCRIPTION	201 6 05
DATE & REVISION	201 6Revision M	REVISION		DATE